

i.MX Android Quick Start

R14 Beta
June 11, 2012

This document is intended to show how to download and run the R14 Beta Release release package in the default configuration. For more information, please refer to the "User Guide".

1. Hardware

This android release supports Freescale i.MX53 SMD Tablet as shown below.



2. Image description

The table describes where the software images in this release will be put into the eMMC partitions:

Image Name	Download target
------------	-----------------

i.MX Android Quick Start, R14 Beta

Freescale Semiconductor, Inc.

u-boot.bin	eMMC boot partition offset 1KB
uImage	eMMC user partition offset 1MB
uramdisk.img	eMMC user sector offset 6MB
system.img	eMMC 2nd partition
recovery.img	eMMC 4th partition

3. Download Images

The MFGTool will be used to download all images into the target board. The MfgTool requires Windows XP or later.

1. Unzip the file ***Mfgtools-Rel-*.tar.gz*** under the ***release_package/tool*** to your favor place. The directory will be referred as MFGTool-Dir in below.
2. Create the "***android***" directory under ***MFGTool-Dir/Profiles/MX53 Linux Update/OS Firmware/files*** directory
3. Copy following files in ***release_package/image/imx53_smd*** to your ***MFGTool-Dir/Profiles/MX53 Linux Update/OS Firmware/files/android/*** directory
 - uImage
 - u-boot.bin
 - uramdisk.img
 - system.img
 - recovery.img

Note: Don't replace any files in "files" and "OS Firmware" directories.

4. Change the MX53 SMD SW26 and SW28 to boot from the External SD Card slot as shown on the table below.

MX53 SMD SD (slot1) Boot

Switch	D1	D2	D3	D4	D5	D6	D7	D8
SW26	OFF	OFF	OFF	OFF	OFF	OFF	ON	OFF
SW28	OFF	OFF	OFF	OFF	OFF	OFF	OFF	OFF

5. Remove any external SD cards if present. This will put the MX53 SMD into download mode.
6. Plug in the Power supply of board (also press Power button).

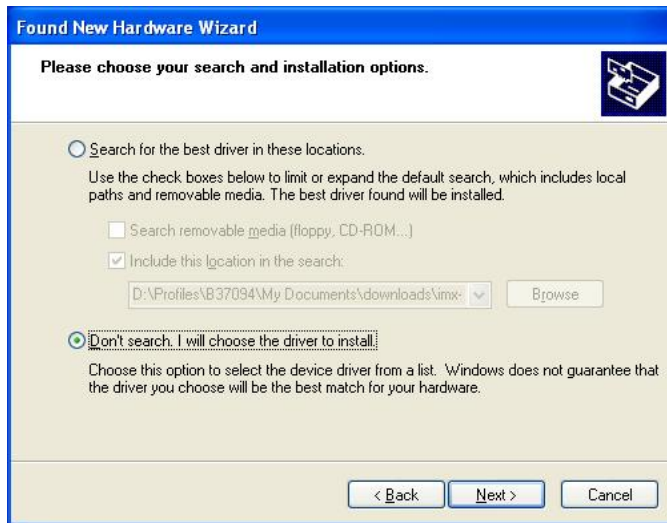
7. Connect the MX53 SMD USB OTG port to the your Windows PC.
8. Press the reset button.
9. If the Found New Hardware Dialog is displayed, Select "No, not this time" and click on "Next". Otherwise skip ahead to step 16.



10. Next select "Install from a list or specific location (Advanced)" and click "Next".



11. Now select "Don't search. I will choose the driver to install" and click next click.



12. Click on "Have Disk ..."

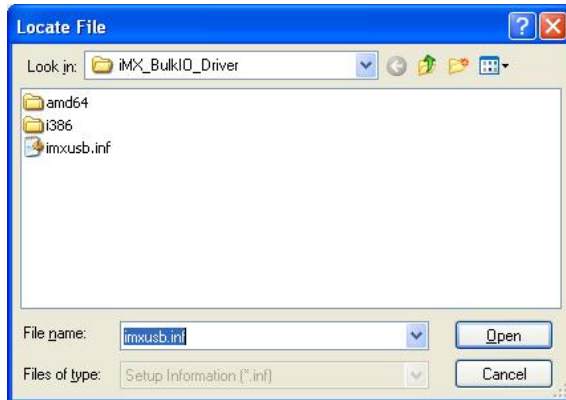


13. Select "Browse".



14. Now navigate to the directory containing "imxusb.inf". Select the "imxusb.inf" file

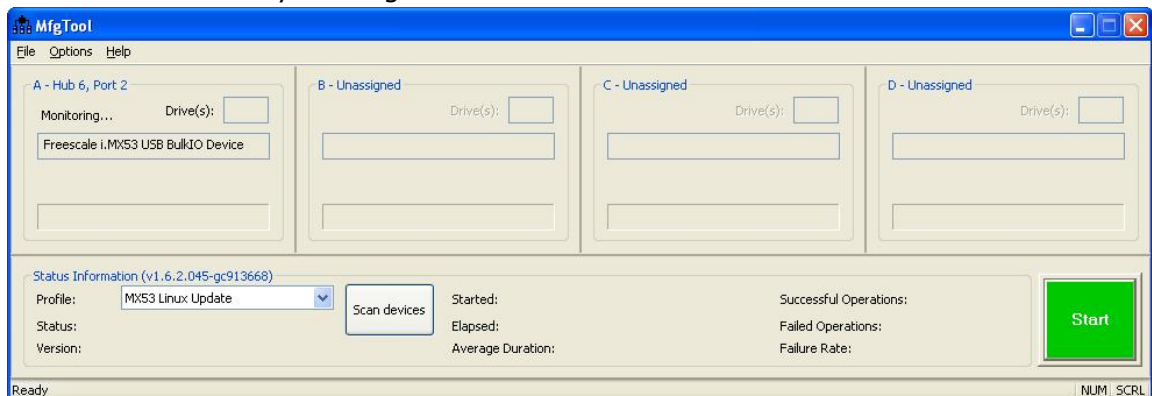
and click "Open". The folder is located under the manufacturing tools directory as follows: Mfgtools-Rel-12.04.01_ER_MX53_UPDATER\Drivers\iMX_BulkIO_Driver



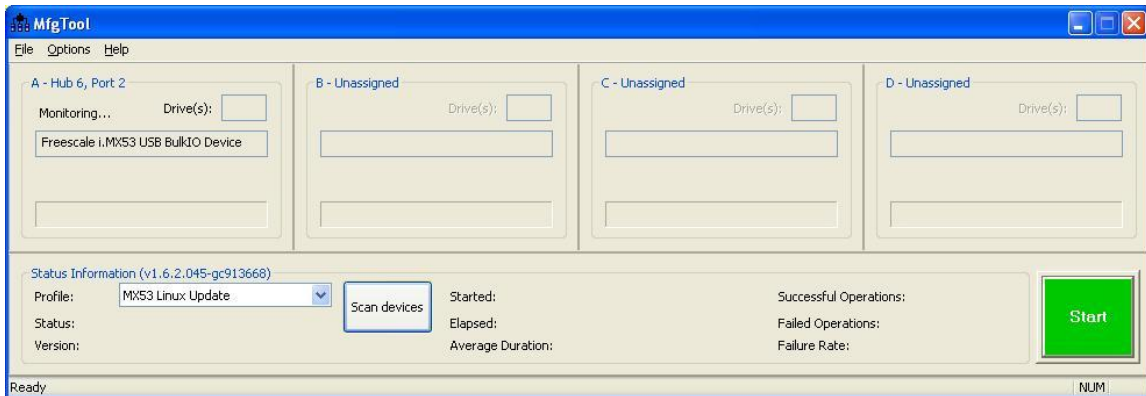
15. And to finish the driver install click "OK".



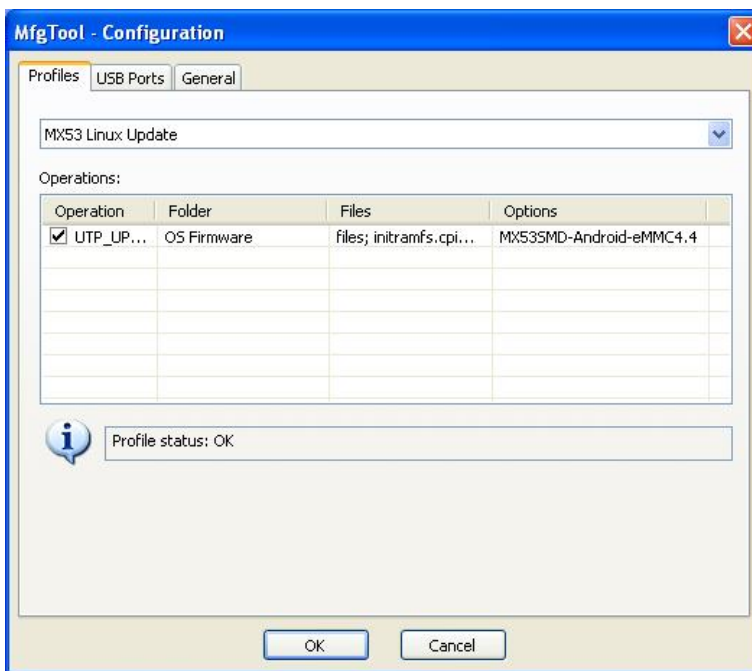
16. Start the MFGTool by clicking "MFGTool.exe" under MFGTool-Dir as shown below.




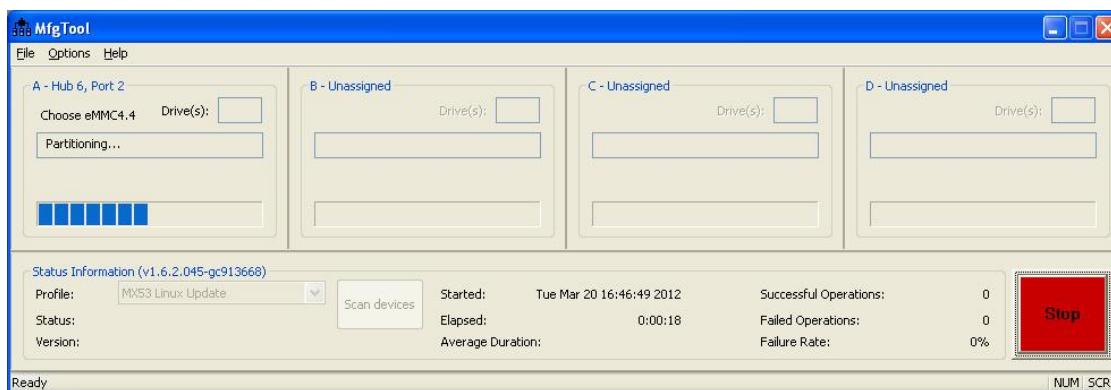
17. Click "Scan devices", which will update the dialog to "Freescall i.MX53 USB BulkIO Device" if it is not already displayed.



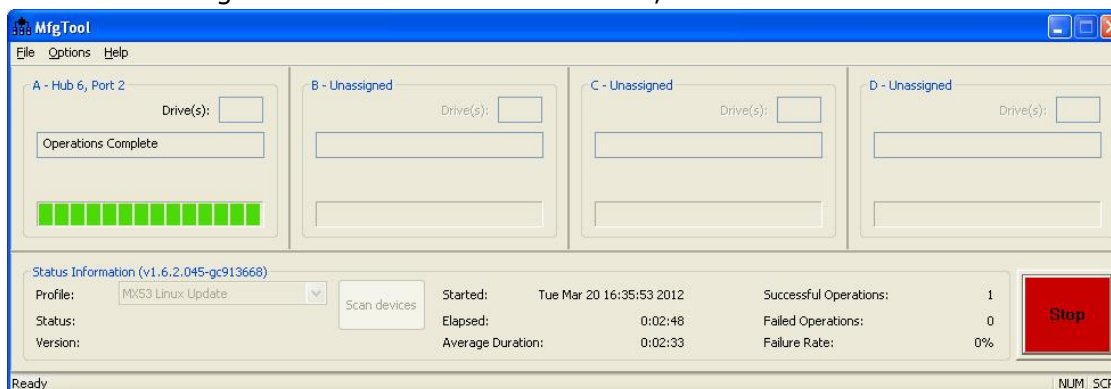
18. Choose **MX53SMD-Android-eMMC** profile in **Option -> Configure -> Profile**, and click "OK".



19. Click start  to start image downloading.
20. During the downloading process, a progress bar will indicate the status. It may take about one or two minutes complete the operation.



21. The below dialog shows if the download finished, the tool will become:



22. Click "Stop" and disconnect the USB cable.

23. Hold the power button down until the MX53 SMD power LED is off. It may take about 5-10 seconds.

24. Change MX53 SMD SW26 and SW28 to boot from the internal eMMC as shown in the table below.

MX53 SMD eMMC(SD slot3) Boot

Switch	D1	D2	D3	D4	D5	D6	D7	D8
SW26	OFF	ON	OFF	OFF	ON	ON	ON	OFF
SW28	OFF	OFF	OFF	OFF	OFF	OFF	OFF	ON

4. Boot

The default u-Boot setting will boot the MX53 SMD without any changes. To boot the board simply press the power button.

5. Android Start !

After above download and setting, please reboot the board and wait for Android boot up.



